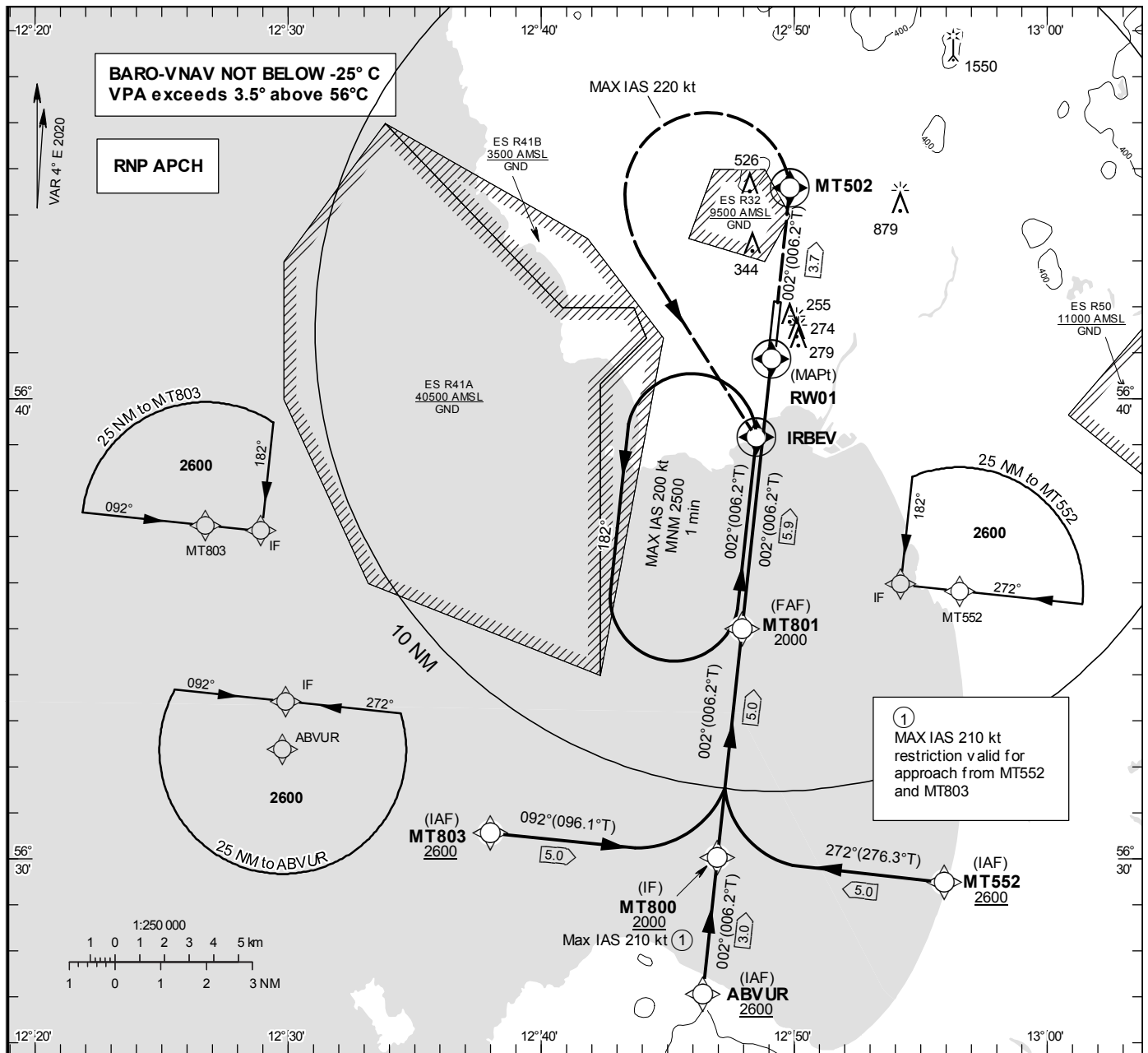


HALMSTAD**RNP RWY 01**

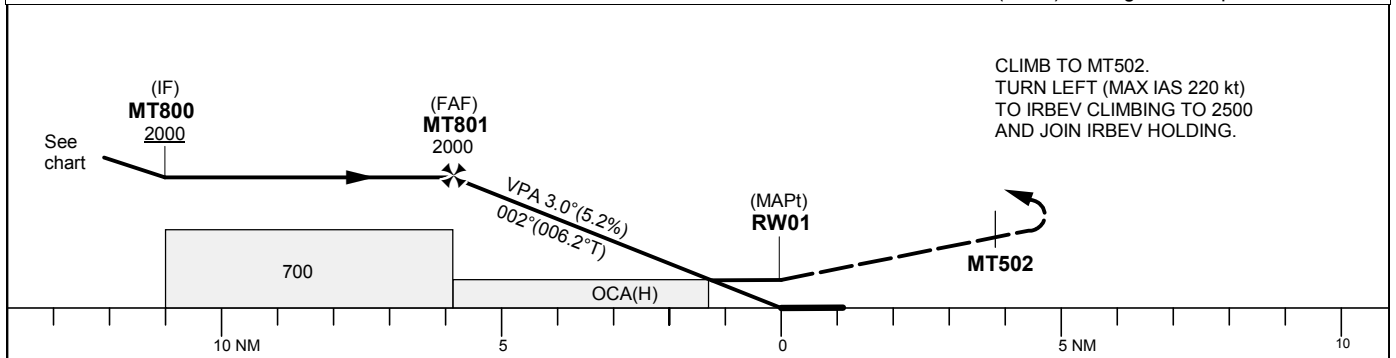
EGNOS Ch 41182 E 01A

**INSTRUMENT
APPROACH
CHART – ICAO****THR ELEV 64 ft, AD ELEV 101 ft**OCH are related to THR.
BRG are MAG (True).
ALT, HGT and ELEV in ft.

HALMSTAD TOWER	130.105
	135.055



TA 5000 ft AMSL RDH 50 ft Note: PAPI (3.25°) not aligned with procedure



OCA (H)					Final approach	Distance FAF-MAPt 5.9 NM					
Cat of ACFT	A	B	C	D	Dist to RW01	5	4	3	2		
LPV	385 (321)	398 (334)	406 (342)	416 (352)	ALT	1710	1390	1070	750		
LNAV/VNAV	405 (341)	417 (353)	425 (361)	435 (371)	GS	kt	80	100	120	140	160
LNAV	510 (450)				Rate of descent	ft/min	425	530	635	745	850
Circling	640 (540)	830 (730)	1280 (1180)	1280 (1180)							
Circling Cat D Max IAS 195 kt											

CHANGE: Editorial

HALMSTAD

RNP RWY 01 via MT552

Path Desc	Waypoint Identifier	Fly-over	Course °M(°T)	Dist (NM)	Turn Dir	Altitude	Speed	VPA/ RDH	Rec Navaid	Navigation Specification
IF	MT552	-	-	-	-	+2600	-	-	-	RNP APCH
TF	MT800	-	272° (276.3°)	5.0	-	+2000	-210	-	-	RNP APCH

RNP RWY 01 via ABVUR

Path Desc	Waypoint Identifier	Fly-over	Course °M(°T)	Dist (NM)	Turn Dir	Altitude	Speed	VPA/ RDH	Rec Navaid	Navigation Specification
IF	ABVUR	-	-	-	-	+2600	-	-	-	RNP APCH
TF	MT800	-	002° (006.2°)	3.0	-	+2000	-	-	-	RNP APCH

RNP RWY 01 via MT803

Path Desc	Waypoint Identifier	Fly-over	Course °M(°T)	Dist (NM)	Turn Dir	Altitude	Speed	VPA/ RDH	Rec Navaid	Navigation Specification
IF	MT803	-	-	-	-	+2600	-	-	-	RNP APCH
TF	MT800	-	092° (096.1°)	5.0	-	+2000	-210	-	-	RNP APCH

Path Desc	Waypoint Identifier	Fly-over	Course °M(°T)	Dist (NM)	Turn Dir	Altitude	Speed	VPA/ RDH	Rec Navaid	Navigation Specification
IF	MT800	-	-	-	-	+2000	-	-	-	RNP APCH
TF	MT801	-	002° (006.2°)	5.0	-	@2000	-	-	-	RNP APCH
TF	RW01	Y	002° (006.2°)	5.9	-	@114	-	-3.0/50	-	RNP APCH
TF	MT502	Y	002° (006.2°)	3.7	-	-	-	-	-	RNP APCH
DF	IRBEV	Y	-	-	L	+2500	-220	-	-	RNP APCH

Path Desc	Waypoint Identifier	Fly-over	Course °M(°T)	Dist (NM)	Turn Dir	Altitude	Speed	VPA/ RDH	Rec Navaid	Navigation Specification
HM	IRBEV	Y	002° (006.2°)	-	L	+2500	-200	-	-	RNAV 1

FAS Data Block

RNP RWY 01

Input data

Operation Type	0
SBAS Provider	1 (EGNOS)
Airport Identifier	ESMT
Runway	01
Runway Letter	0
Approach Performance Designator	0
Route Indicator	
Reference Path Data Selector	0
Reference Path Identifier	E01A
LTP/FTP Latitude	564051.4870N
LTP/FTP Longitude	0124905.5265E
LTP/FTP Ellipsoidal Height (metres)	56.3
FPAP Latitude	564204.3885N
Delta FPAP Latitude (seconds)	72.9015
FPAP Longitude	0124919.9260E
Delta FPAP Longitude (seconds)	14.3995
Threshold Crossing Height	50.00
TCH Units Selector	0 (feet)
Glidepath Angle (degrees)	3.00
Course Width (metres)	105.00
Length Offset (metres)	0
HAL (metres)	40.0
VAL (metres)	50.0

Output data

Data Block	10 14 0D 13 05 01 00 00 01 31 30 05 3E 28 53 18 ED 3F 80 05 33 16 8B 39 02 7F 70 00 F4 01 2C 01 64 00 C8 FA 68 55 48 31
Calculated CRC Value	68554831

Required Additional Data

ICAO Code	ES
LTP/FTP Orthometric Height (metres)	19.7